



LEGEND	
IRON PIN	•
PK NAIL	△
STONE MON.	□
CONC. MON.	◻
CORNER POST	○

M.S. No. 410 J. CRITTENDEN
M.S. No. 2204
WILSON & FOWLER

M.S. No. 410

N. 5°-04'-43" E. 406.72'
S. 82°-22'-57" E. 221.16'
S. 11°-39'-11" W. 607.84'

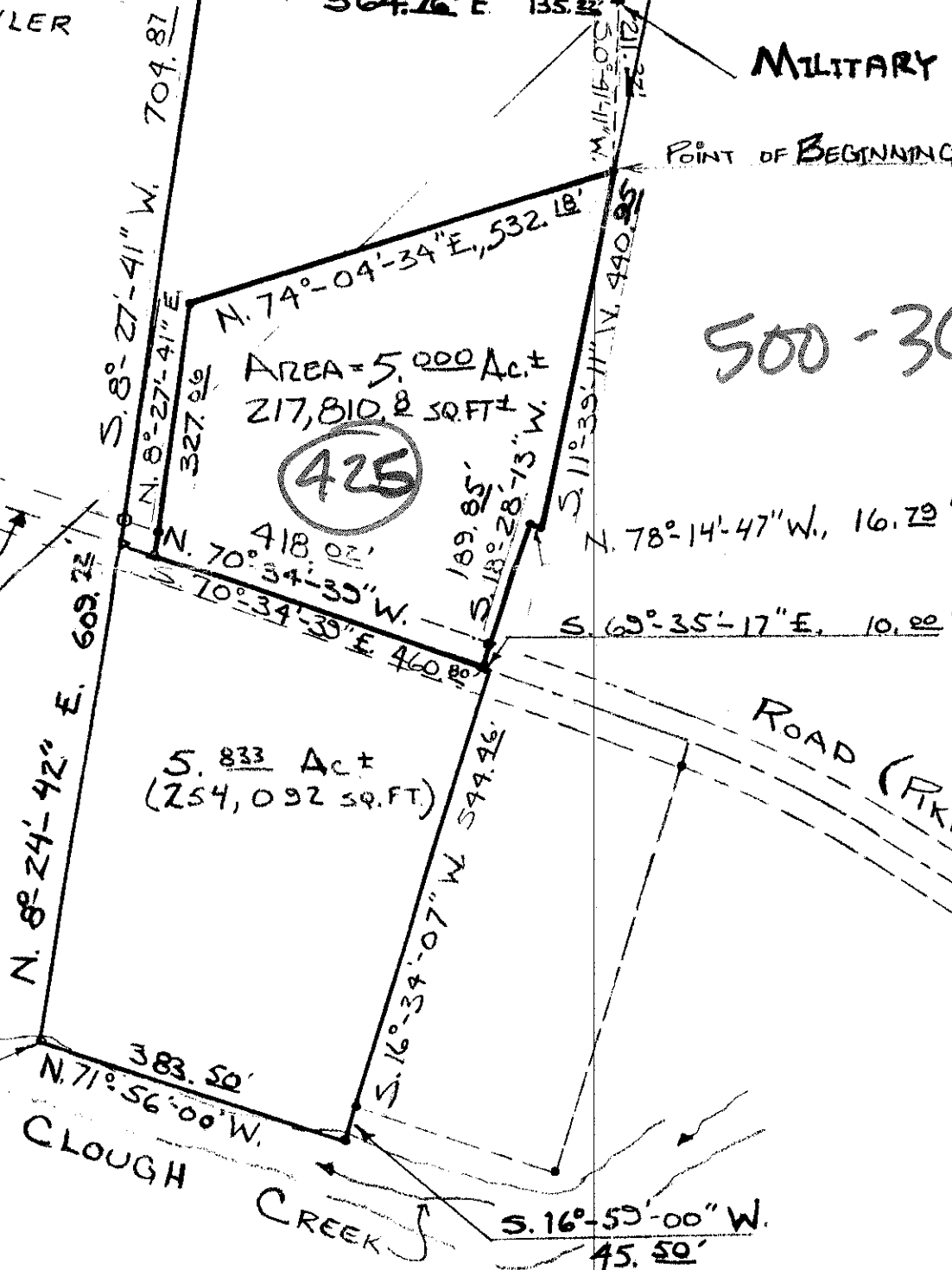
MILITARY SURVEY CORNER STONE

POINT OF BEGINNING

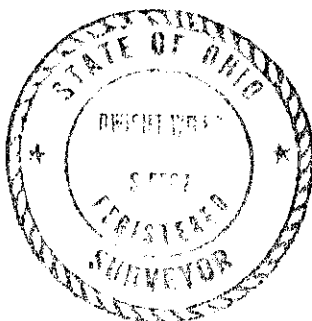
500-360-425

CLOUGH
ORIGINAL

WILSON & FOWLER
M.S. No. 2204
M.S. No. 2276
N. MASSIE



CLOUGH CREEK
FEMA ZONE A-5 STREAM
BASE FLOOD ELEVATION - 560 ft.



DWIGHT R. WILES & ASSOC
CIVIL ENGINEERS & SURVEYORS

CINCINNATI, OHIO 45230

10/31/97

PLAT OF SURVEY

M.S. # 2276, 2204, & 410

ANDERSON TOWNSHIP, HAMILTON CO.
STATE OF OHIO

SCALE: 1" = 200'

OCTOBER, 1997

0 200 400 600

REV. 7-5-97